

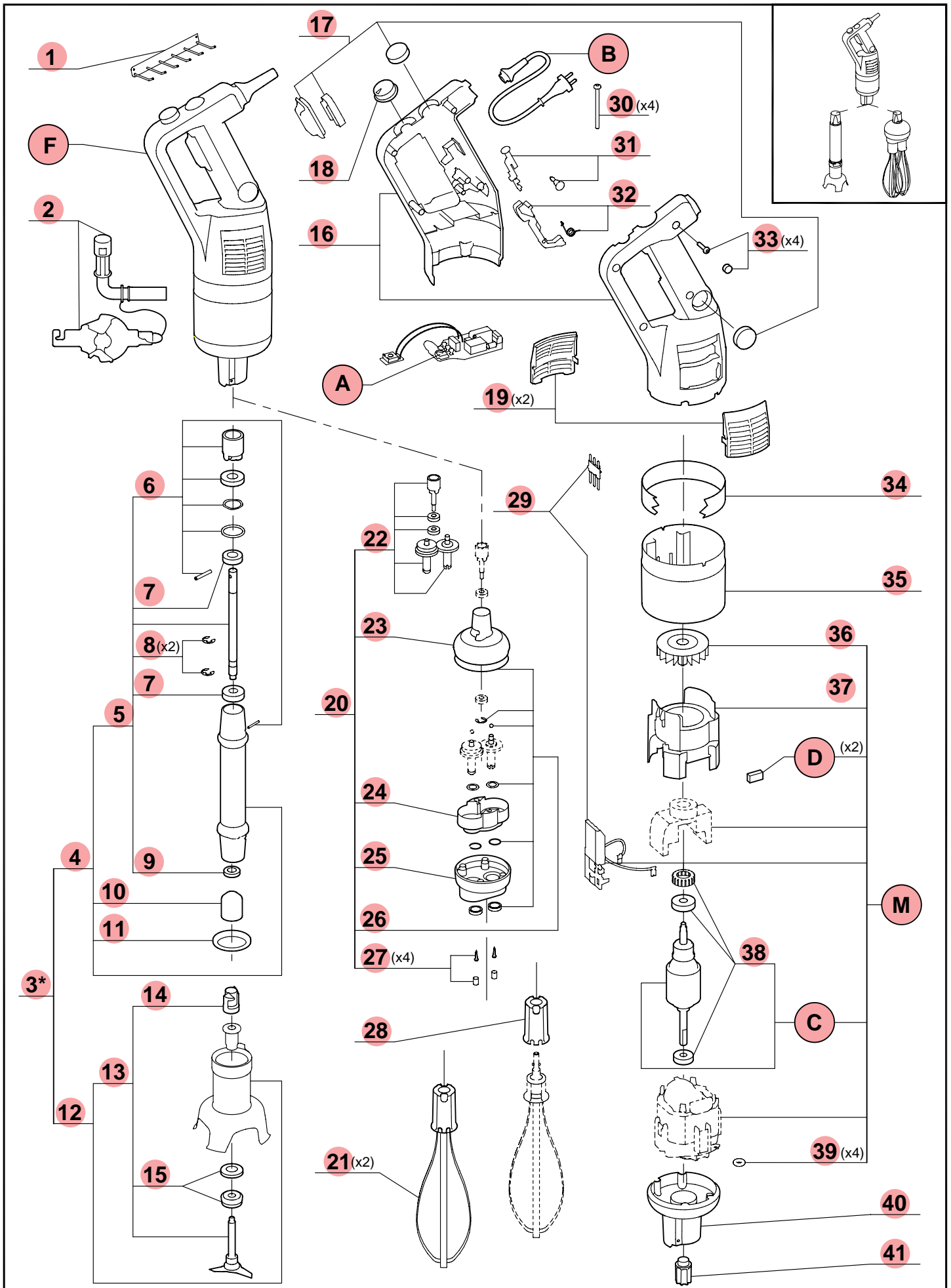
robotcoupe®

CMP 250 Combi

N° de série / Serial number

- 161 - - - - -

- 373 - - - - -



INDEX	PART NUMBER	DESCRIPTION
1	89630	WALL BRACKET
2	89662	MP/CMP DISMOUNTING TOOL
3	27249	COMPLETE FOOT CMPC 250
4	89656	CMPC250 FOOT
5	89811	CMPC250 DRIVING SHAFT
6	89643	MPC/CMP/CMPC FOOT KIT
7	89645	BEARING 608 2RS
8	89647	"RING \"E\""
9	89646	SEAL 8x18x5
10	89626	DRIVING FRAME MP/CMP
11	89628	MP/CMP FOOT SEAL
12	89678	CMP BELL COVER
13	89676	CMP BLADE
14	89627	MP/CMP DRIVING HUB
15	89642	SEAL RING
16	89547	CMP HANDLES L+R KIT
17	89533	MP/CMP WATERPROOFNESS KIT
18	89536	MP/CMP VARIATOR SWITCH
19	89546	CMP VENT COVERS KIT
20	89651	CMP WHISK BOX
21	89 649	CMP WHISK
22	89549	BF CMP GEARS RING BEAR
23	89379	MP/CMP BF UPPER BODY
24	89385	PLATE+SCREW+CAP SCREW
25	89746	BF CMP LOWER BODY PLAS
26	89 545	KIT JOINT RONDELLE BF +VIS+CACHE VIS
27	89389	BF SCREW+CAP SCREW
28	89552	MP/CMP WHIP EJECTOR
29	89548	CMP CONNECTOR KIT
30	89 623	CMP SCREW M4x95
31	89530	MP/CMP KNOBS KIT
32	89531	MPC/CMP COMMAND ARM KIT
33	89532	MP/CMP HANDLE SCREW
34	89609	CMPC250 FERRULE
35	89612	CMP MOTOR FERRULE
36	89576	CMP VENTILATOR
37	89570	CMP VENTILATOR PIPE
38	89679	CMP MOT BEARING
39	89639	SEAL 12x1.5 x4
40	89641	CMP ALUMINIUM CASING
41	89661	CMPC DRIVING HUB
A	89751	CMP 230V CIRC BOARD
B	89538	MPC/CMP 230V POWER CORD
C	89759	CMP 230V INDUCED CIRCUIT
D	89575	CMP BRUSHS
F	29819	CMP250C EUR BLOCK MOT ASSEMBLY
M	89767	CMP250 230V MOTOR